



BELVEDERE

---

R A M A III



Belvedere stands as a canvas of heritage in the city's heart, marrying timeless elegance with the pulse of modern life.

Here, stories and dreams entwine, creating a legacy that whispers through generations.

It's an abode where every detail promises not just a home, but a trove of lifelong happiness.

---

“ A thoughtfully crafted creation for the finest living and lifelong happiness. ”

---





"Our vision melds classic and contemporary,  
achieving a modern classic elegance that redefines living.

We've reinvented, not just reinterpreted, to craft spaces  
that resonate with today's desires—open, adaptable,  
luxurious.

It's an architecture that mirrors the individual's essence,  
a sophisticated canvas for life's rich tapestry."



# "LUXURY REDEFINED"



## DESIGN

---

### Effortless Elegance

Our residences blend low-maintenance design with readiness for future technologies like solar integration, offering lasting elegance that's always ahead of its time.



## LOCATION

---

### Privileged Proximity

Strategically situated, our community affords effortless access to top-tier schools, extensive shopping, and the city's main arteries, defining the true luxury of convenience.



## FUNCTIONALITY

---

### Elegant Efficiency

Five floors of smartly designed space, complete with an elevator, balance family interaction with personal sanctuary, crowned by the indulgence of a private pool.



# "INNOVATIVE HARMONY"

A woman with long dark hair in a ponytail, wearing a white top, is looking at a smart doorbell system mounted on a wall. The doorbell has a small screen displaying a camera feed. The background is a modern interior with large windows.

## SECURITY

### Assured Safety

Enjoy enhanced security with a Video Door Phone & Doorbell, CCTV, and a comprehensive home security system, all managed via mobile apps.

A family of four (two men, a woman, and a child) are sitting on a white sofa, laughing and looking at a smartphone held by one of the men. The background shows a bright, modern living room with large windows and indoor plants.

## CONNECTIVITY

### Seamless Link

Experience unparalleled digital convenience, connecting your home to the world with state-of-the-art home automation systems for a smooth lifestyle.

A man in a dark t-shirt is standing next to a white electric vehicle (EV) parked in a garage. He is holding a charging cable and looking at a smartphone. In the background, there is a large window and a modern home interior.

## SUSTAINABILITY

### Green Living

Future-proof your home with preparation EV charger installations and solar cell integration, embracing eco-friendly energy solutions.



# "SERVICE EXCELLENCE"

A technician wearing a white hard hat and a light-colored short-sleeved shirt with dark overalls is standing on a ladder. He is looking up at a tree with green leaves. The background shows a modern building with large windows and a wall-mounted light fixture.

## AFTER SALES SERVICES

---

### Reliable Support

Trusted and reliable, our after-sales services ensure easy access to maintenance and repair, making home care effortless and dependable.

A security guard is sitting at a desk in a control room, looking at several large monitors displaying CCTV footage. The monitors show various indoor and outdoor scenes, including hallways, rooms, and parking areas. The guard is wearing a dark uniform and is focused on the screens.

## 24/7 SECURITY

---

### Constant Safety

Feel secure and at ease with comprehensive CCTV surveillance, offering peace of mind in every corner of your home.





"LIFE BY  
YOUR DESIRE"

FEEL IMMERSE

---

Immerse yourself in an ambiance that enhances your home life,  
where every moment is a treasure.

Experience a lifestyle that resonates with your deepest desires.  
From the luxury of hosting a chef's table in your own home,  
embracing the flexibility of working from home (WFH) to  
nurturing your wellbeing with Yoga and Pilates, every aspect of  
your life is infused with a feeling of joy and fulfillment.





# Belvedere

## SINGLE HOUSE

- 4 Penthouse Bedrooms
- 6 Bathrooms
- 4 Parking
- Private Pool Villa
- Main Entrance Foyer
- Lift
- Outdoor Terrace
- Private Pool
- Rooftop

---

**USAGE AREA : 648 SQM**



# Belvedere

SINGLE HOUSE



## FLOOR 1

- 1 4 Parking
- 2 Living Area
- 3 Pantry & Kitchen
- 4 Lift
- 5 Powder Room
- 6 Private Pool
- 7 Maid Room



## FLOOR 2

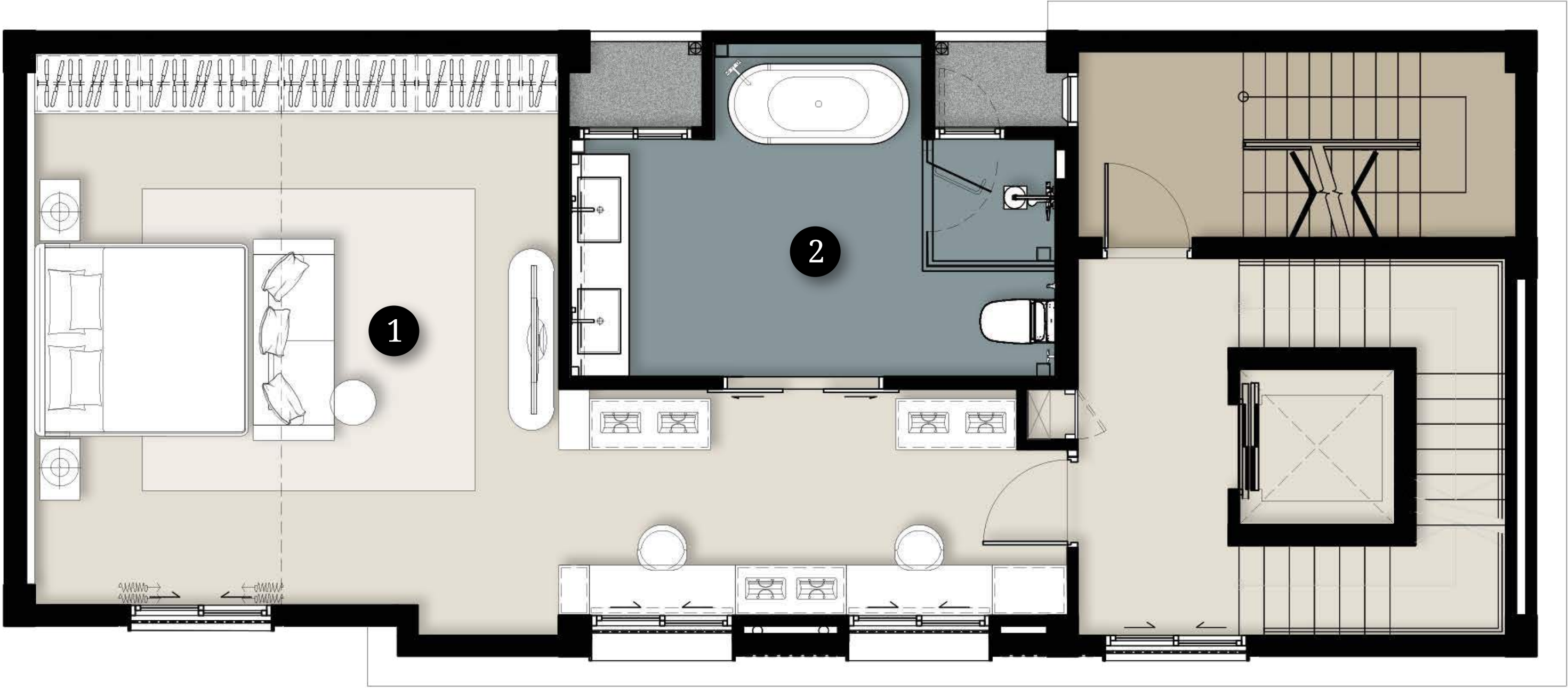
- 1 Living Area
- 2 Dining Area
- 3 Pantry
- 4 Powder Room
- 5 Fire Exit

Remark : The images shown are computer-generated previews.  
Actual decorations and finishes will vary according to  
the preferences of each buyer.



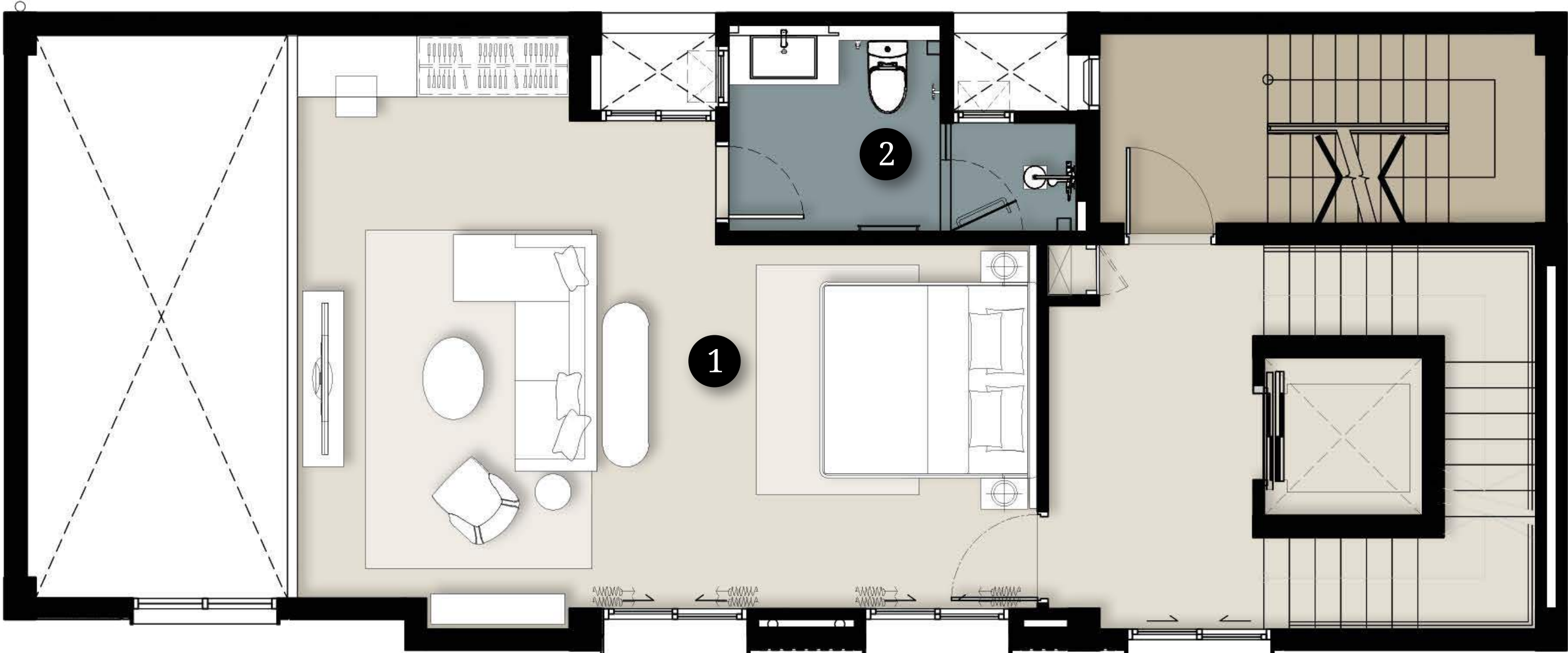
# Belvedere

SINGLE HOUSE



**FLOOR 3**

- 1 Master Bedroom
- 2 Master Bathroom



**FLOOR 4**

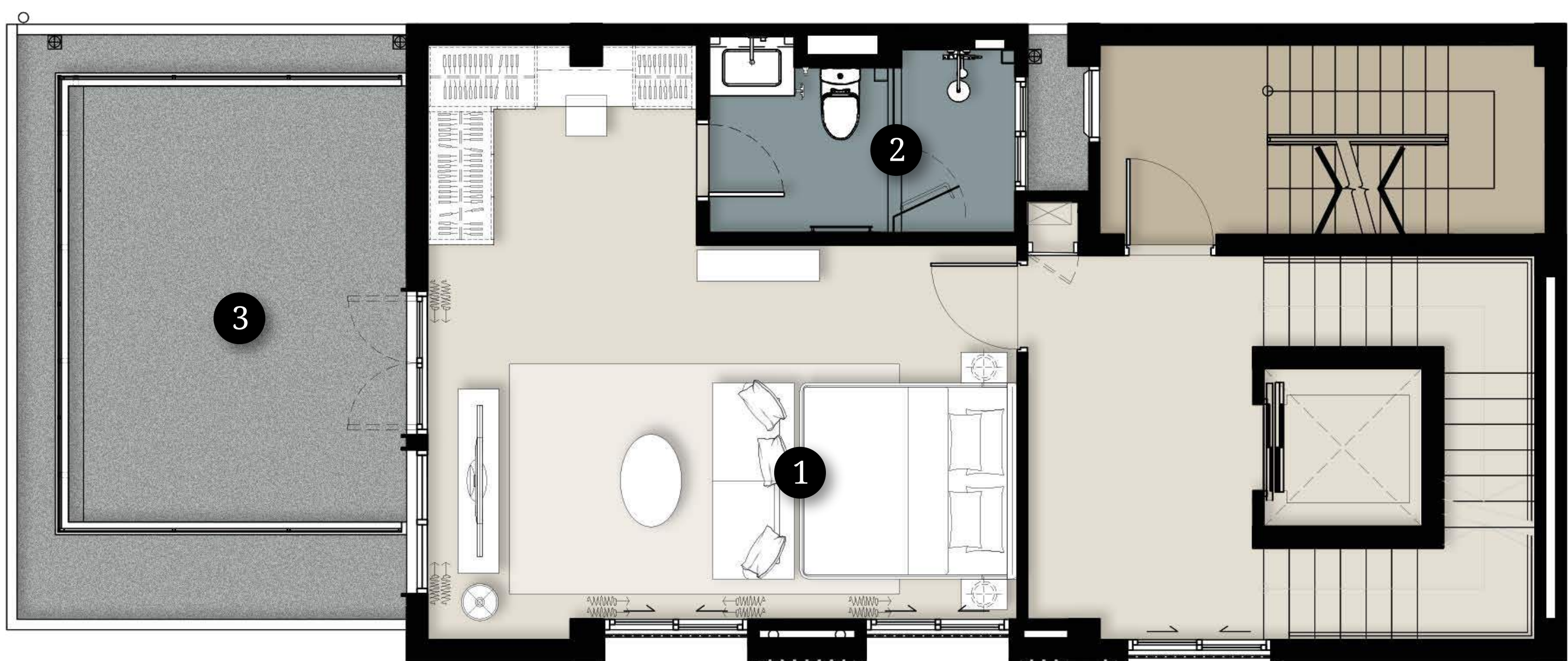
- 1 Junior Master Bedroom
- 2 Ensuite Bathroom

Remark : The images shown are computer-generated previews.  
Actual decorations and finishes will vary according to  
the preferences of each buyer.



# Belvedere

SINGLE HOUSE



**FLOOR 5**

- 1 Bedroom 3
- 2 Ensuite Bathroom
- 3 Outdoor Terrace



**FLOOR 6**

- 1 Bedroom 4
- 2 Ensuite Bathroom

Remark : The images shown are computer-generated previews.  
Actual decorations and finishes will vary according to  
the preferences of each buyer.





# Braintree

## TWIN HOUSE

- Duplex Master Bedroom
- 2 Penthouse Bedrooms
- 6 Bathrooms
- 3 Parking
- Main Entrance Foyer
- Lift
- Rooftop

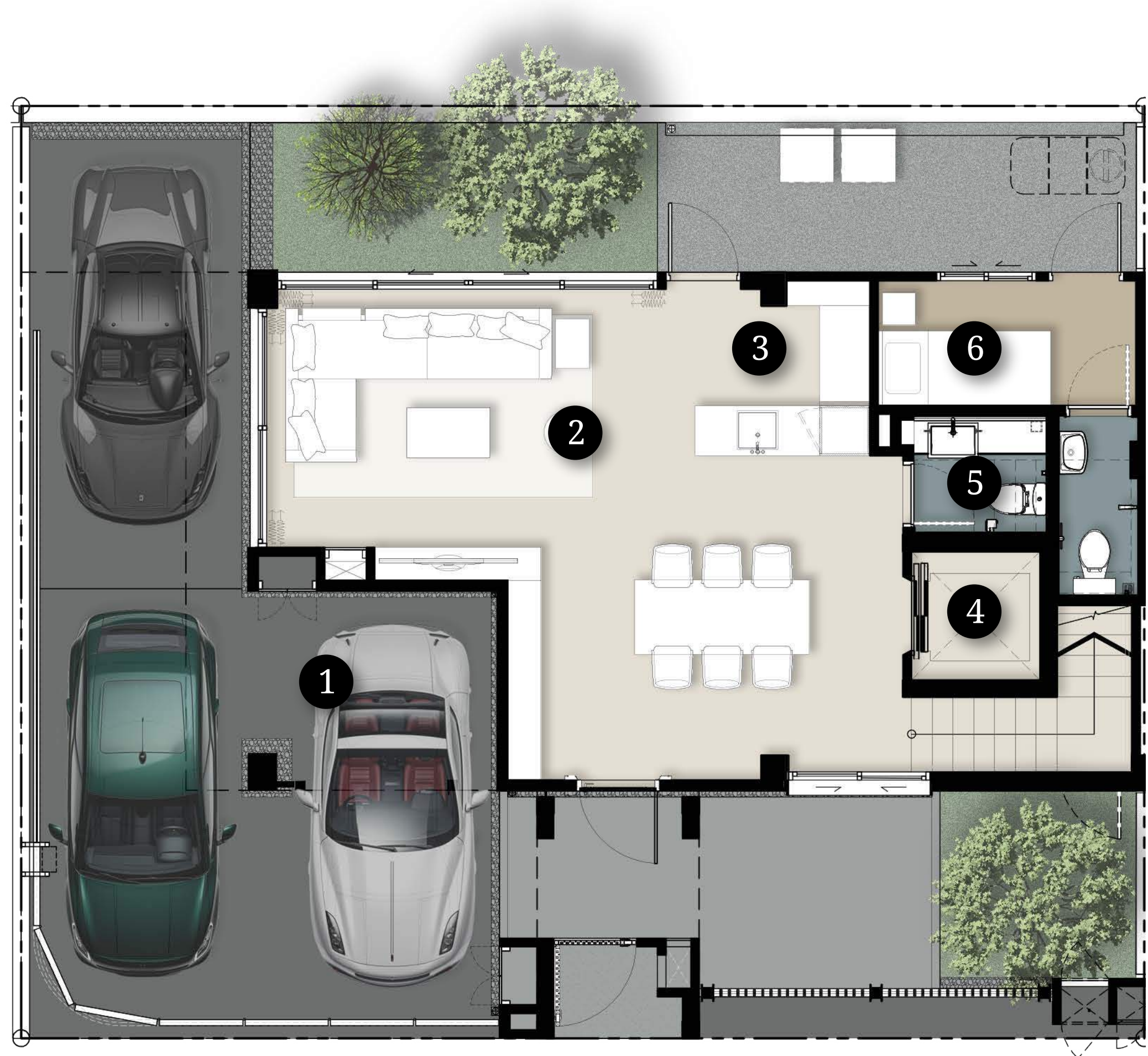
---

**USAGE AREA : 553 SQM**



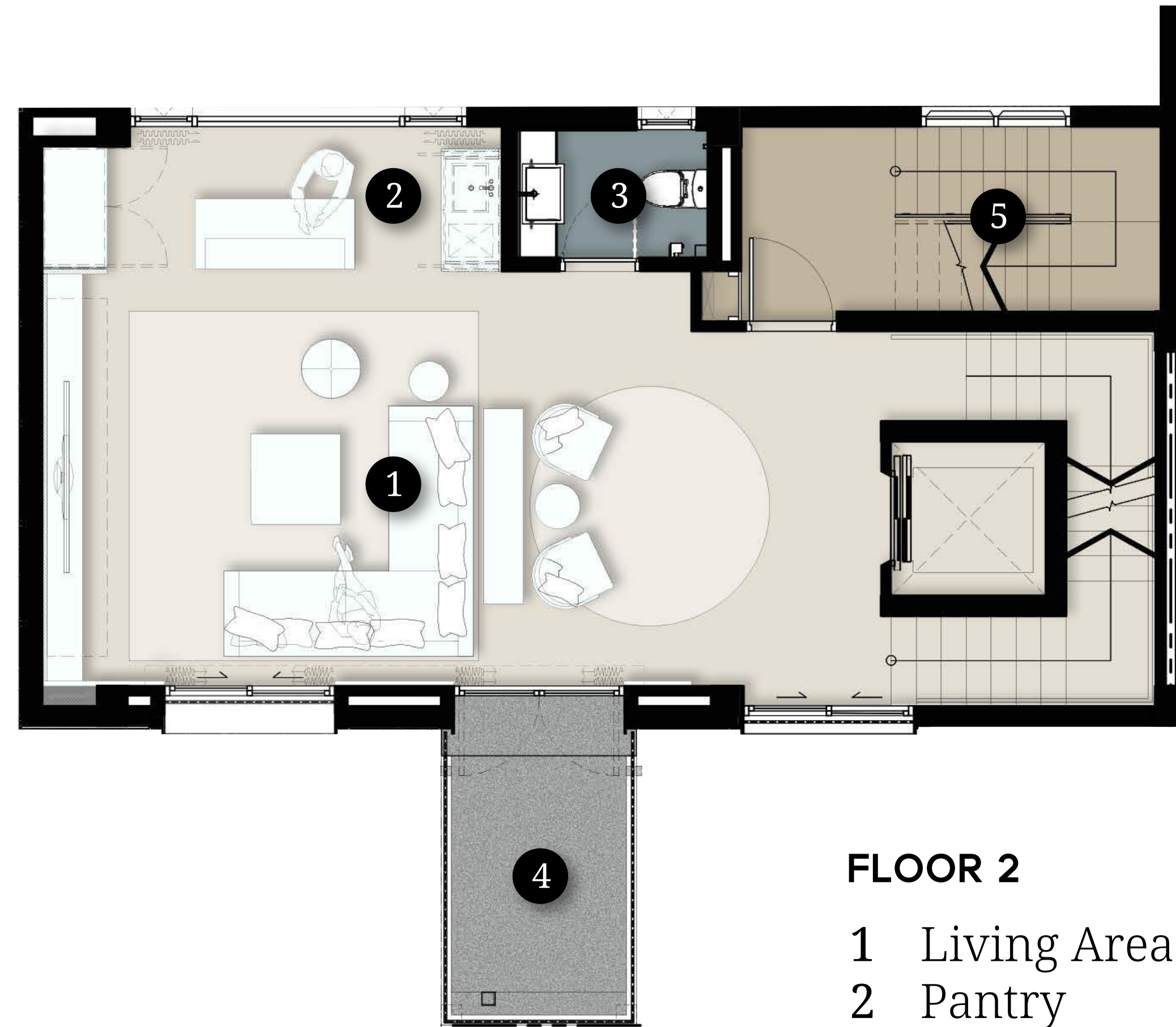
# Braintree

TWIN HOUSE



FLOOR 1

- 1 3 Parking
- 2 Living & Dining Area
- 3 Pantry & Kitchen
- 4 Lift
- 5 Powder Room
- 6 Maid Room



FLOOR 2

- 1 Living Area
- 2 Pantry
- 3 Powder Room
- 4 Balcony
- 5 Fire Exit

Remark : The images shown are computer-generated previews.  
Actual decorations and finishes will vary according to  
the preferences of each buyer.



# Braintree

TWIN HOUSE



**FLOOR 3**

- 1 Bedroom
- 2 Ensuite Bathroom



**FLOOR 4**

- 1 Bedroom
- 2 Ensuite Bathroom

Remark : The images shown are computer-generated previews.  
Actual decorations and finishes will vary according to  
the preferences of each buyer.



# Braintree

TWIN HOUSE



**FLOOR 5**

- 1 Master Walk-in Closet
- 2 Master Bathroom



**FLOOR 6**

- 1 Master Bedroom
- 2 Ensuite Bathroom

Remark : The images shown are computer-generated previews.  
Actual decorations and finishes will vary according to  
the preferences of each buyer.





BELVEDERE

R A M A   I I I

www.wynnestate.com



+66 (0) 93 002 4888



@wynn.estate



Wynn Estate



@wynn.estate